

# SUPPORTING LOCAL BUSINESSES ON CHENEY-SPOKANE ROAD



**Dear Community Members,**

As a community, it is vital that we come together to support our local businesses while critical infrastructure improvements are being made along Cheney-Spokane Road. Local businesses help to maintain the character and charm of our community. Here are some ways you can help support them!

## 1. Visit Local Businesses

Despite the closure of Cheney-Spokane Road immediately south of the business loop, businesses will remain open and accessible from the Cheney-Spokane Road/US-195 interchange. Make an effort to visit these businesses and continue to shop, dine, and use their services. Your continued patronage makes a difference!

## 2. Spread The Word

Word of mouth is a powerful tool. Tell your friends, family, and colleagues about the businesses on Cheney-Spokane Road and encourage them to support these businesses as well. Share posts on social media and write positive reviews to help raise awareness and attract more customers.

## 3. Provide Feedback and Suggestions

If you have ideas on how local businesses can better serve the community during the road closure, share your thoughts with them. Constructive feedback and suggestions can help businesses adapt and find new ways to attract and retain customers.

## Conclusion

By making a concerted effort to visit, promote, and support these businesses, we can help them navigate this challenging time. Together, we can ensure that our local businesses continue to thrive and contribute to the vibrant community we all cherish.

The logo for Latah Bistro, featuring the text "latah bistro" in a lowercase, serif font with a decorative flourish underneath.

The logo for Latah Creek Family Dentistry, featuring a stylized tooth icon and the text "Latah Creek Family Dentistry" in a bold, sans-serif font.

The logo for Wine &amp; Taps, featuring the text "WINE &amp; TAPS" in a bold, serif font with a stylized ampersand and the text "at Latah Bistro" below it.

The logo for stcu, featuring the text "stcu" in a bold, lowercase, sans-serif font with a graduation cap icon above the "u".

The logo for Subway, featuring the text "SUBWAY" in a bold, uppercase, sans-serif font with a green arrow pointing to the right.



**STORAGE  
SOLUTIONS**

The logo for Shelby's Burgers, featuring the text "Shelby's" in a stylized, lowercase font with a star above the "y" and "Burgers" below it.

The logo for Latah Creek animal hospital, featuring a stylized animal icon and the text "LATAH CREEK animal hospital" in a bold, sans-serif font.

The logo for Chaps, featuring the text "chaps" in a lowercase, cursive font with "EST 2004" below it, all enclosed in a circular wreath.

The logo for nom nom, featuring the text "nom nom" in a bold, lowercase, sans-serif font with a purple-to-blue gradient.

The logo for Latah Latté, featuring a stylized coffee cup icon and the text "latah latté" in a lowercase, sans-serif font.

The logo for Yoke's Fresh Market, featuring the text "Yoke's" in a large, orange, cursive font and "FRESH MARKET" in a bold, uppercase, sans-serif font below it.

The logo for Secure It self storage @ Qualchan, featuring the text "SECURE IT" in a bold, uppercase, sans-serif font with a padlock icon, "self storage" in a lowercase, sans-serif font below it, and "@ Qualchan" at the bottom.

# EMERGENCY PREPAREDNESS

## *What can I do now, to be prepared?*

It's always recommended to create a customized emergency plan for your home and family. Emergencies come in all forms and can happen at any time. Weather events, power outages, wildfires, floods, wind, hazardous air or conditions, and others. There are many things you can do now for any emergency. [Spokane County Emergency Management](#) will help you get prepared!



- Visit [SCEM.org](#) TODAY!



**Sign up for Alert Spokane to get the most current evacuation information during an emergency in your area:**

- Sign up for ALERT Spokane at [www.alertspokane.org](http://www.alertspokane.org)
- Text **ROADS** to **99411** to receive notifications about the Cheney-Spokane Road Closure
- Access the **SREC Evac Map** at <https://bit.ly/SRECOfficialEvac> and put in your address for current information



Be aware of various points of ingress/egress in your neighborhood, so that during emergency evacuations, you are ready to take action to evacuate.



**SPOKANE REGIONAL  
EMERGENCY  
COMMUNICATIONS**

## *If there is an emergency evacuation, what should I do?*

**Know the evacuation guidelines** and listen to emergency instructions! If you want information, check for notifications from ALERT Spokane or from text line 99411.

## *What will the route be for an emergency evacuation?*

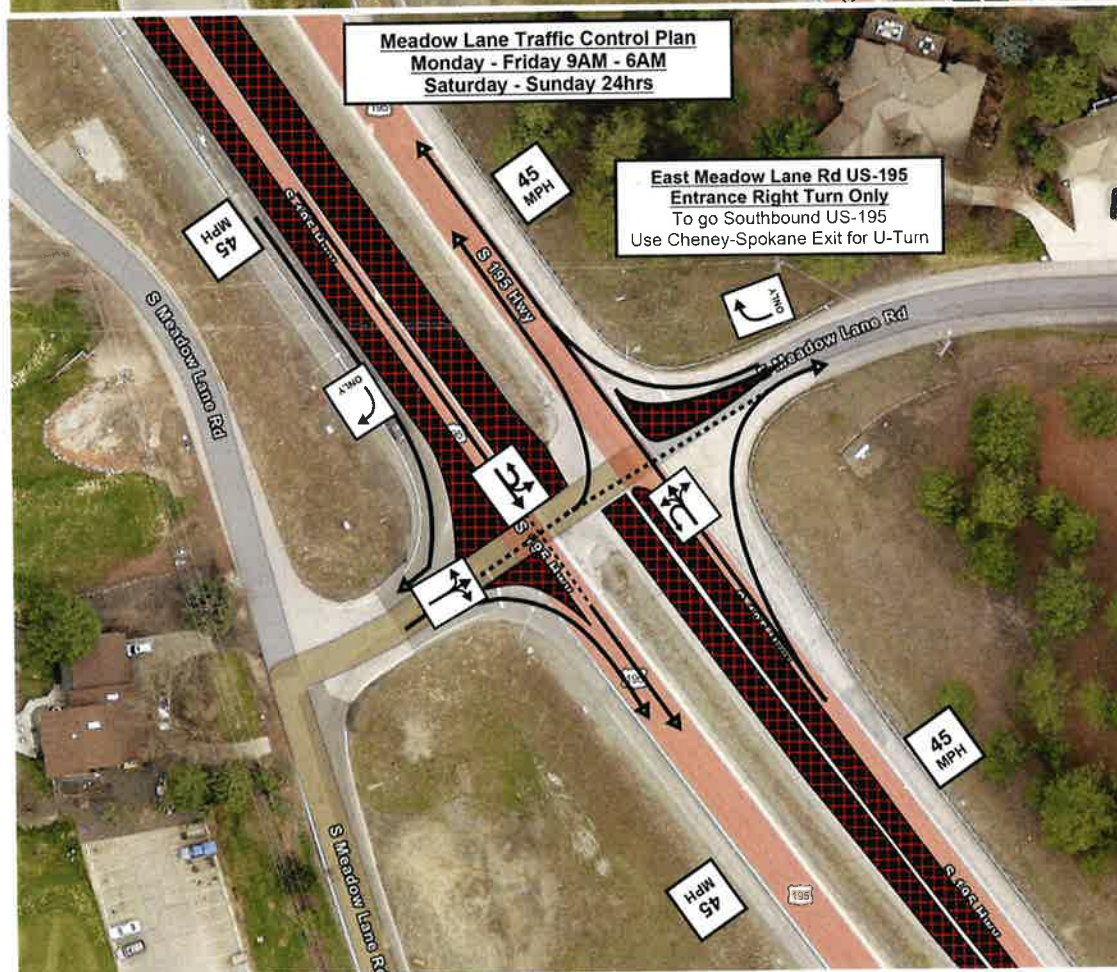
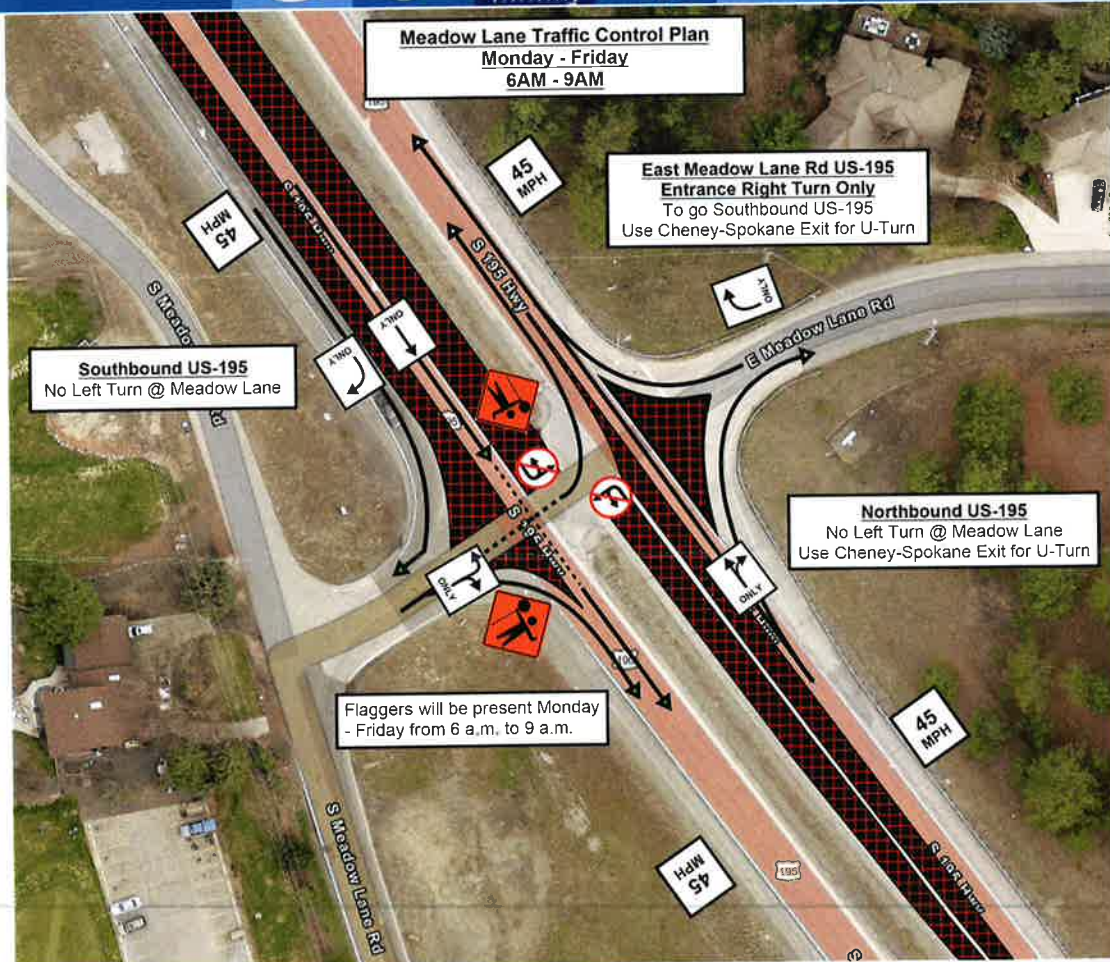
If, and when, there is a need for emergency evacuations, **first responders will determine the best evacuation routes** based on the conditions of the incident. Evacuation information will be shared with the community through **ALERTSpokane** and other public information channels.

## *More questions?*

Emergency Preparedness

Spokane County Emergency Management – (509) 477-3046







# Cheney-Spokane Road Closure Information



What: Cheney-Spokane Road Closure

4300 S. Cheney-Spokane Road to Cedar Road

When: June 11th – October, 2024

[my.spokanecity.org/CheneySpokaneRoad](http://my.spokanecity.org/CheneySpokaneRoad)



**Eagle Ridge Blvd to I-90**  
W Eagle Ridge Blvd >  
S Cedar Rd >  
W Taylor Rd >  
S Sherman Rd >  
Cheney-Spokane Rd >  
S Grove Rd >  
I-90 East/West  
14.5 miles/Approx. 25 min



**W Qualchan Dr to S Meadow Lane Rd**  
W Qualchan Rd >  
W Lincoln Blvd >  
S Lincoln Way >  
S Parkridge Blvd >  
W Eagle Ridge Blvd >  
S Meadow Lane Rd >  
US-195 North/South  
3.5 miles/Approx. 12 min